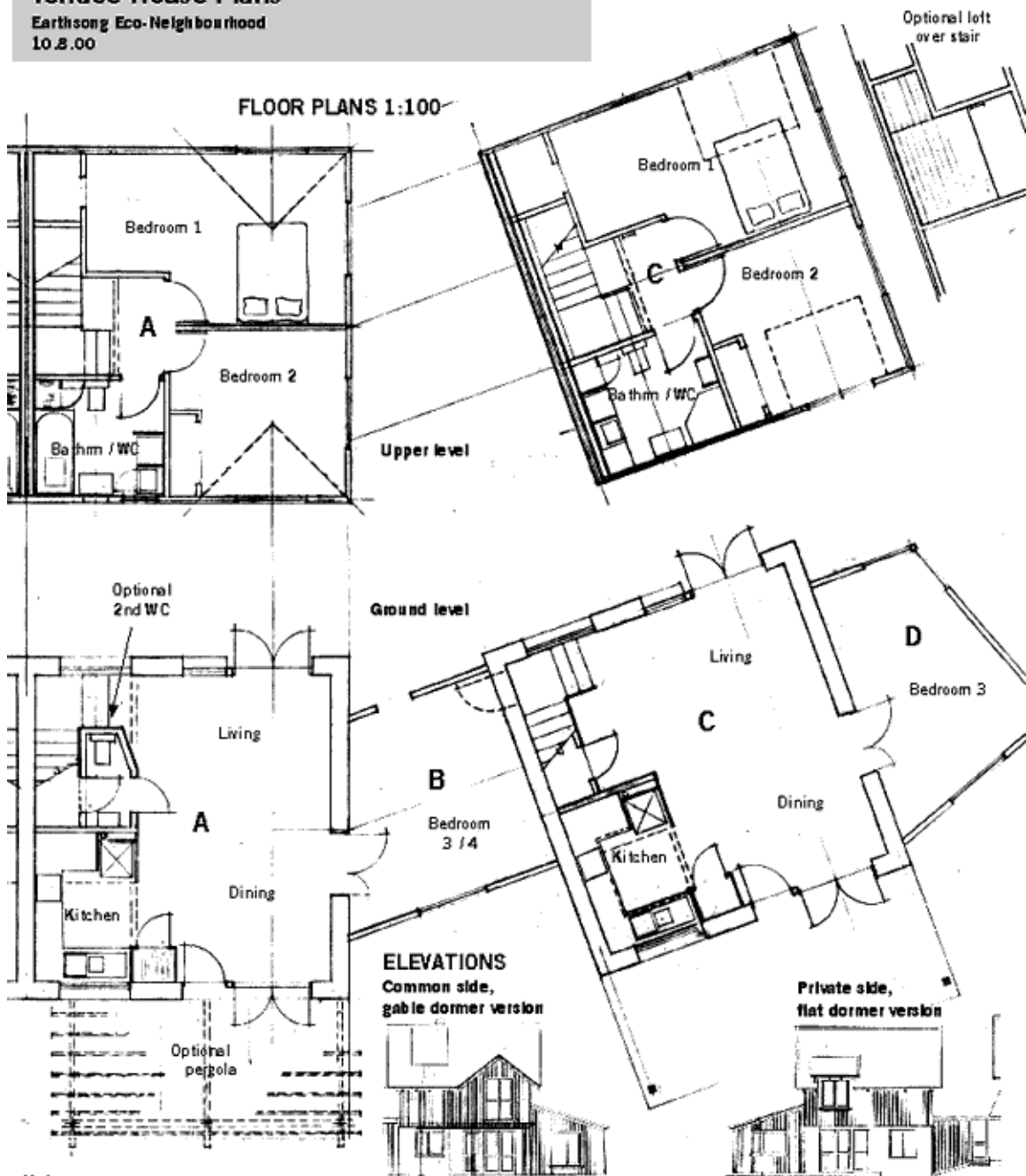


Terrace House Plans

Earthsong Eco-Neighbourhood
10.8.00



Notes:

- * 2 bedroom terrace units comprise either main part A or C
- * 3 bedroom units comprise either main part A plus additional room B, or main part C plus additional room D
- * 4 bedroom units comprise main part C plus additional rooms B & D
- * Some units have their private yards to the north, and others have entries and common sides to the north. Some units have gable dormers and others flat dormers (see unit schedule).
- * All kitchens face the common side.
- * Any pergolas (where opted) face north.

This plan: units 5-20; 25-26.